

Quick Reference cards

Cafitesse 400

**DOUWE
EBBERTS**

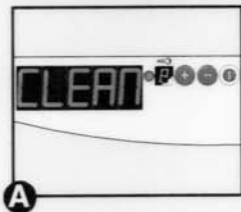


espresso
and coffee **solutions**
We know coffee

A close-up photograph of three dark brown coffee beans, showing their characteristic shape and texture. They are arranged in a slight curve, with one bean in the foreground and two slightly behind it.

Daily Cleaning Reference Card Cafitesse 400

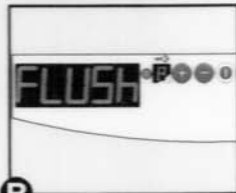
(Always clean after end of coffee services)



A

Warning signals / Display messages

- Once a day, the message CLEAN (A) appears in the display. (The ON/OFF LED is flashing)
- During cleaning the message FLUSH (B) appears in the display. (The ON/OFF LED is flashing)
- After the 'clean'-message has appeared in the display, you have 4 hours to clean/flush the dispenser before the dispenser becomes blocked. (The ON/OFF LED and EMPTY LED's are flashing)
- After cleaning/flushing the dispenser will be working again.



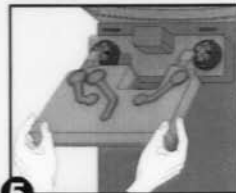
B



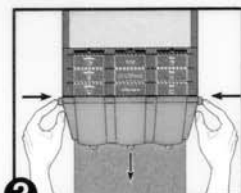
1

Removal of parts to be cleaned

- Open the lid of the cooling compartment and switch off dispenser with ON/OFF button. (fig. 1)
- Remove the brew basket. (fig. 2)
- For a dispenser without a mixer; Remove the combi-trough. (fig. 3)
- For a dispenser with a mixer; Pull the clamps downwards and remove the combi-trough. (fig. 4)
- Remove the box. (fig. 5)
- Remove cup tray and drip tray. (fig. 6)



5

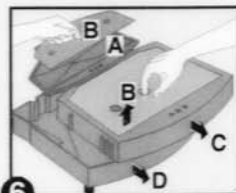


2

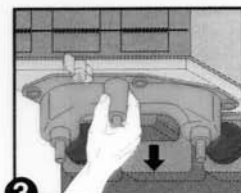
Cleaning of removed parts

Combi-trough and box

- Preferably clean in a dishwasher. (fig. 7)
- If no dishwasher is available, combi-trough and box should be soaked in hot water with Cafitesse cleaning agent.
- Fill bucket, bowl or sink with 8 litres of hot water ($\pm 80^\circ\text{C}$).
- Add 40 ml of Cafitesse cleaning agent and soak for ± 15 minutes.
- Store cleaned combi-trough and box near the dispenser (exchange kit)



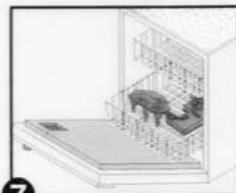
6



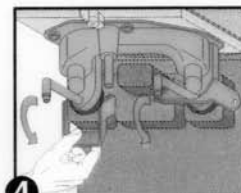
3

Brew basket, cup tray and drip tray

- Soak parts in bucket, dish or sink. Do not place these parts in a dishwasher!
- Fill bucket, bowl or sink with 8 litres of hot water ($\pm 80^\circ\text{C}$).
- Add 40 ml of Cafitesse cleaning agent and soak for ± 15 minutes.
- Rinse parts with hot water and dry with paper towel.



7



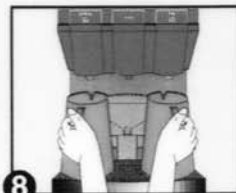
4

Assembly of cleaned parts

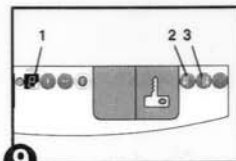
- Place cleaned parts back into the dispenser.
- Make sure that all parts are correctly reinstalled after cleaning.

Flushing

- Switch the dispenser on with the ON/OFF button.
- Place a jug (± 2 l) under each outlet. (fig. 8)
- Rinse first the left side by pressing simultaneously buttons (1) and (2). (fig. 9)
- Then rinse the right side by pressing simultaneously buttons (1) and (3). (fig. 9)

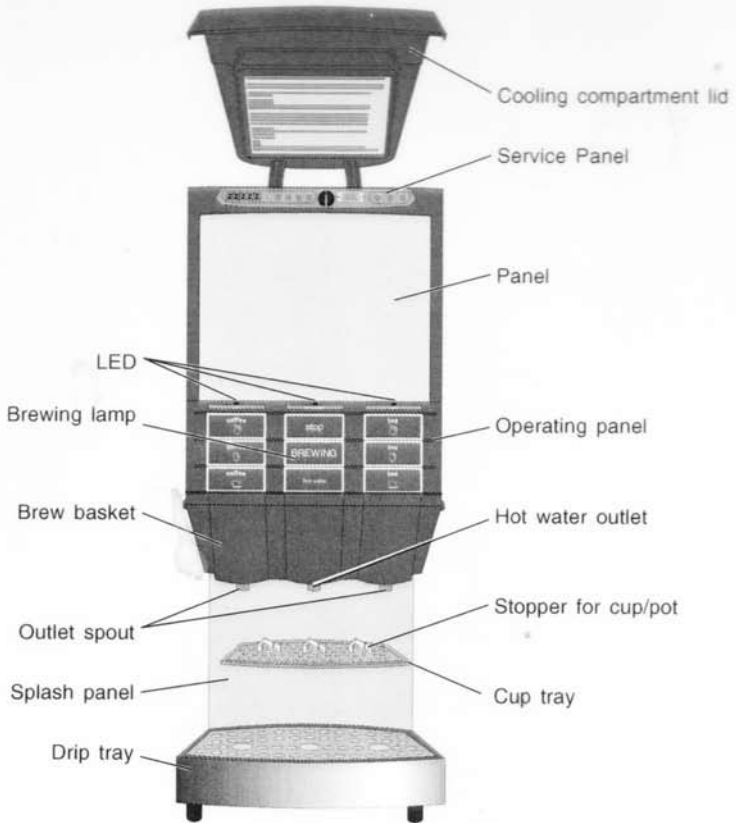


8

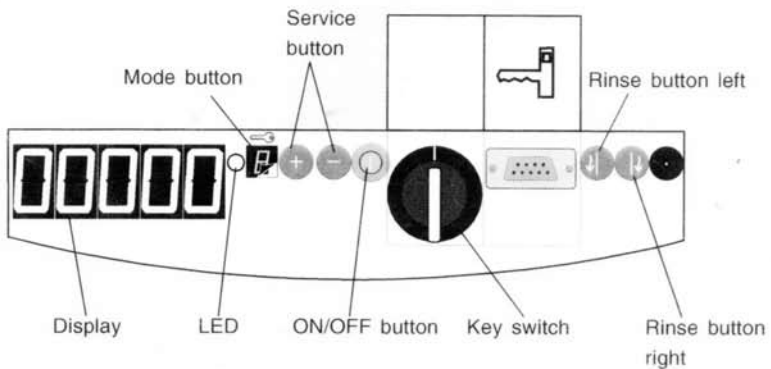


9

Description of Dispenser Components



Service panel



HACCP Reference Card Cafitesse 400



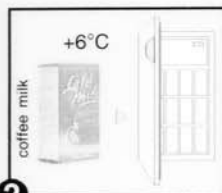
1

Guidelines

- For correct operation of the dispenser, at least the guidelines mentioned above must be taken into consideration. The operator is held responsible for the correct operation.



6

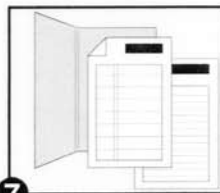


2

HACCP guidelines

Storage of Cafitesse products

- Store coffee, tea and cocoa in a freezer at -18 °C. ((fig. 1)
- Thaw coffee, tea and cocoa in a refrigerator at +6 °C. (This takes approx. 3 days)
- Store Café Milk in a refrigerator at +6 °C. (fig. 2)
- Always use the packs according to the 'first-in first-out' principle. (Observe the 'best before date' on the pack)



7

Handling of Cafitesse products

- Ensure hygienic handling:
 - wash hands (fig. 3),
 - work clean,
 - keep the working area tidy.
- Check the pack for damage and shake it 10 times vigorously before use. (fig. 4)
- Observe the user instructions on the pack.
- Mark the actual date on the pack and insert the pack into the dispenser. (fig. 5)
- Dispense and check a cup.
- Use packs within the recommended time period (see indications on the pack).



3



8

Cleaning of the dispenser

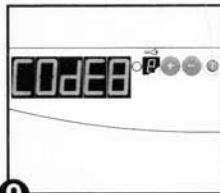
- Observe the cleaning instructions for the Cafitesse 400.
- Clean the dispenser when the delivery is finished.
- Use the special Cafitesse cleaning agent. (fig. 6)
- Fill in the cleaning record card.



4

Filing

- File completed cleaning record cards. (fig. 7)
- File service and maintenance reports of DECS representatives.



9

Service of the dispenser

- When LEDs are flashing or the display indicates a message (fig. 9), observe the Cafitesse 400 reference card for display messages and LED indications.



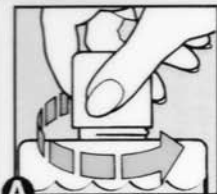
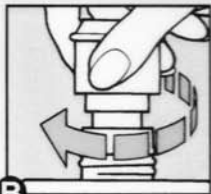
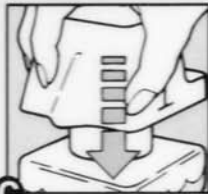
5

Training

- Keep the reference cards at hand.
- Implement the activities on the work schedules.
- Train new staff on HACCP guidelines. (fig. 8)
- For further questions please contact your DECS representative.

Reference Card Cafitesse Cleaning Agent

New bottle


A

B

C

- Use dosing cap and measuring cup of the empty bottle. Order a new set if these are damaged or missing.
- Remove the dosing cap. (A)
- Turn the dosing cap into the bottle. (B)
- Place the measuring cup over the dosing cap on the bottle. (C)

Cleaning the cooling compartment

(only for Cafitesse 400, not for Cafitesse 100)

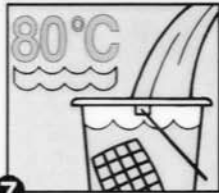
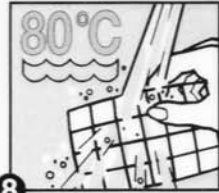
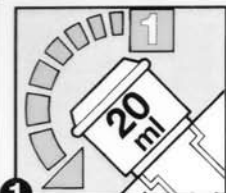
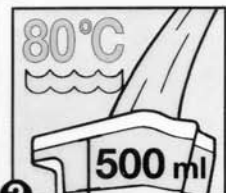
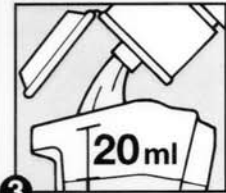
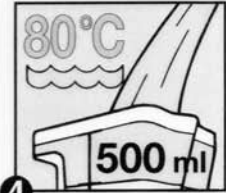
1. Remove the measuring cup, turn the bottle upside down and wait for about 5 sec. to fill the dosing cap with 20 ml of cleaning agent. (fig. 1)
2. Turn the bottle upright.
3. Pour the contents of the dosing cap into the measuring cup. (fig. 3)
4. Fill up the measuring cup with hot water (approx. 80 °C). (fig. 4)
5. Pour the contents **slowly** into the cooling compartment. (fig. 5)
6. Fill the measuring cup to the marking with hot water (approx. 80 °C). (fig. 4)
7. Rinse the cooling compartment by **slowly** pouring the contents of the measuring cup into the cooling compartment. (fig. 6)
8. Dry the cooling compartment with a paper towel.


5

6

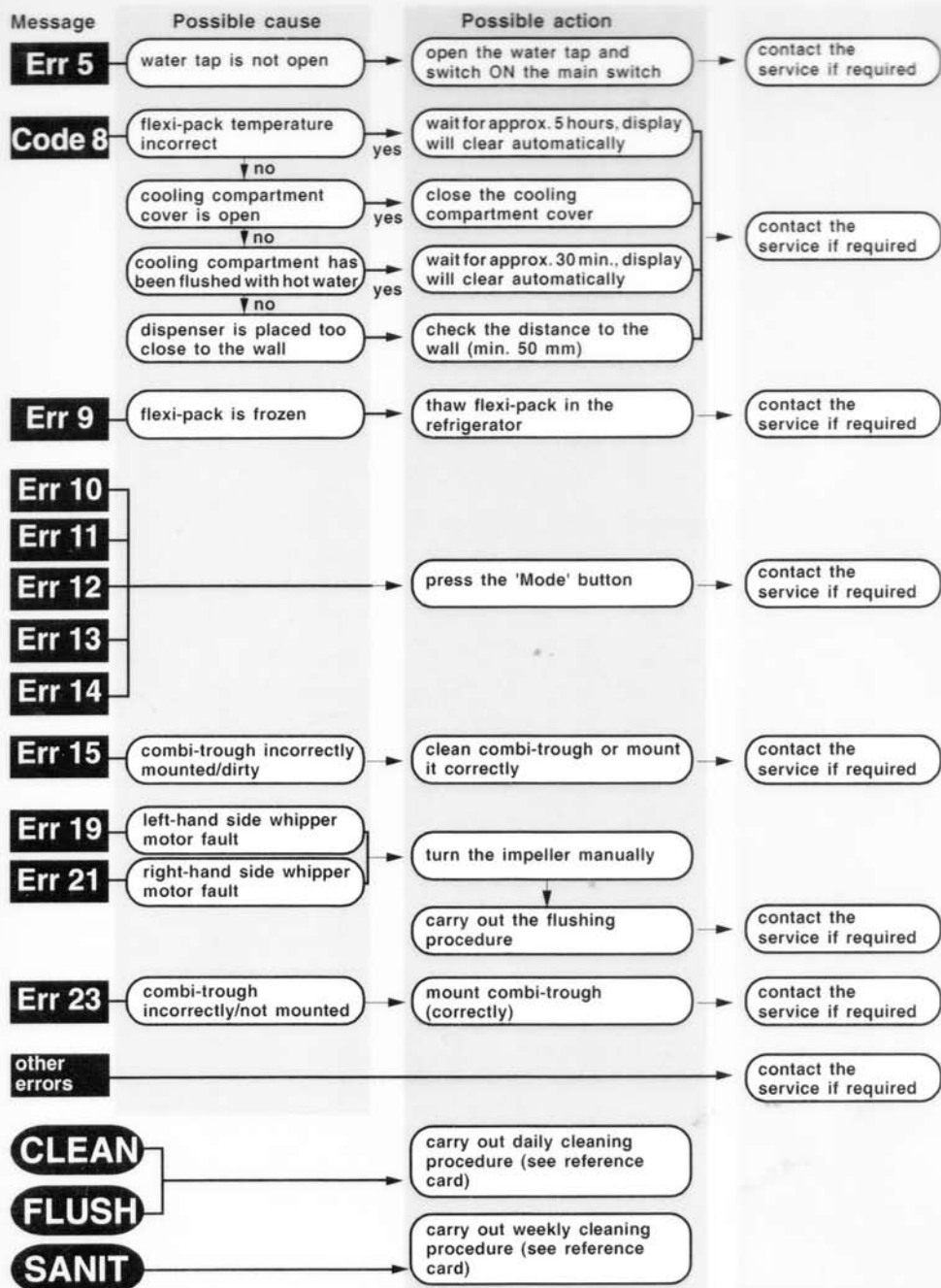
Soaking dispenser parts

1. Remove the measuring cup, turn the bottle upside down and wait for about 5 sec. to fill the dosing cap with approx. 20 ml of cleaning agent. (fig. 1)
2. Turn the bottle upright.
3. Pour the contents of the dosing cap into a bucket, bowl or sink.
4. Repeat this procedure 1x. (fig. 1, 2)
5. Fill up the bucket, bowl or sink with approx. 8 l of hot water (approx. 80 °C). (fig. 7)
6. Put the parts into bucket, bowl or sink and let them soak for about 15 min.
7. Rinse the parts with hot water. (fig. 8)
8. Dry the parts with a paper towel.

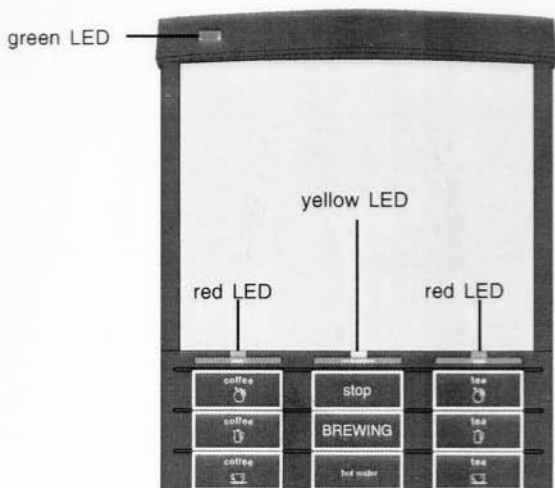

7

8

1

2

3

4


When the bottle is empty, save dosing cap and measuring cup for use with the next bottle.



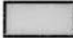
Reference Card Display Messages Cafitesse 400



Reference Card Warning Signals Cafitesse 400



Possible combination of LEDs

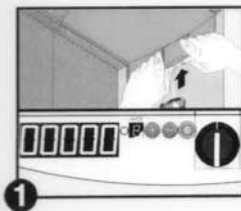
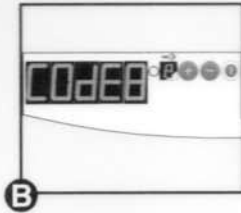
			Explanation
On	Off	Off	Standby mode
On	Off	On	Flexi-pack(s) empty
On	On	Off	Boiler temperature (too) low
On	On	On	Boiler temperature (too) low Flexi-pack(s) empty
Flashing	Off	Off	Check display for message Dispenser is functioning
Flashing	Off	Flashing	Check display for message Dispenser is blocked
Flashing	On	Flashing	Check display for message Dispenser is blocked Boiler temperature (too) low
Flashing	Off	On	Check display for message Dispenser is blocked Flexi-pack(s) empty
Flashing	On	Off	Check display for message Dispenser is blocked Boiler temperature (too) low
Flashing	On	On	Check display for message Dispenser is blocked Boiler temperature (too) low Flexi-pack(s) empty

Weekly Cleaning Reference Card Cafitesse 400

(Always clean after end of coffee services)

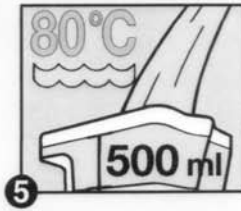
Warning signals / Display messages

- Once a week the message **SANIT (A)** appears in the display. (The ON/OFF LED is flashing)
- After the 'sanit'-message has appeared in the display, you have 4 hours to clean the cooling compartment before the dispenser becomes blocked. (The ON/OFF LED and EMPTY LED's are flashing)
- During cleaning the cooling compartment the message **CODE 8 (B)** appears in the display. The message will disappear after a short while.



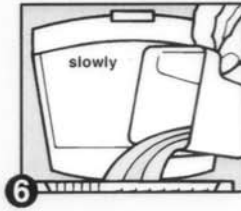
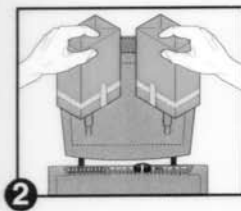
Preparation

- Open the lid of the cooling compartment and switch off dispenser with **ON/OFF** button. (fig. 1)
- Remove both flexi-packs. (fig. 2)
- Place a jug (± 2 l) underneath each outlet. (fig. 3)



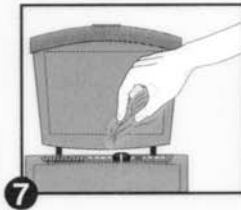
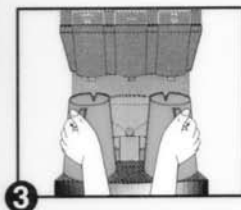
Cleaning cooling compartment

- Pour 20 ml of Cafitesse cleaning agent in the measuring cup. (fig. 4)
- Fill measuring cup up to the 500 ml mark with hot water. (fig. 5)
- Pour hot water **slowly** into the cooling compartment. (fig. 6)



Flushing the cooling compartment

- Fill measuring cup up to the 500 ml mark with hot water (± 80 °C). (fig. 5)
- Pour hot water **slowly** into the cooling compartment. (fig. 6)
- Empty the jugs.
- Dry cooling compartment with paper towel. (fig. 7)



After the weekly cleaning procedures, the daily cleaning procedures must be carried out.

